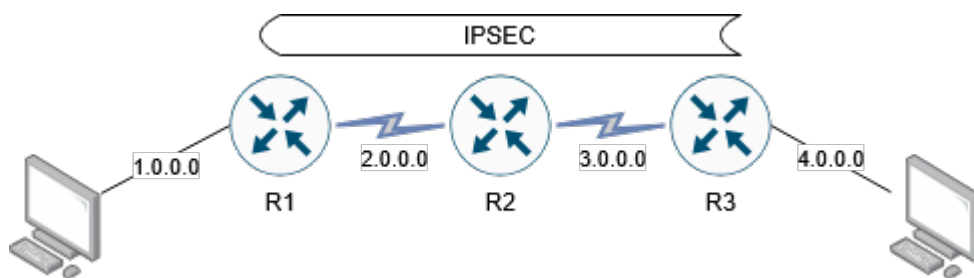


Cisco: IPSEC Tunel



Notatki:

1. Konfigurowanie IKE

```
crypto isakamp enable
crypto isakamp policy 100
  authentication pre-share
  encryption des
  group 1
  hash md5
  lifetime 86400
exit
```

2. Ustalenie Wspólnego Hasła i adresu końcowego punktu tunelu

```
crypto isakamp key cisco123 address 3.0.0.2
show crypto isakamp policy
```

3. Konfigurowanie paramterów IPsec

```
crypto ipsec transfer-set MINE esp-des
  mode tunnel
  exit
show crypto ipsec transfer-set MINE
```

4. Konfigurowanie crypto ACL

```
access-list 102 permit ip host 2.0.0.1 host 3.0.0.2
```

5. Konfigurowanie crypto mapy

```
crypto map MYMAP 10 ipsec-isakamp
  match address 102
  set transform-set MINE
  set peer 3.0.0.2
  exit
show crypto map
```

6. Zaaplikowanie crypto-mapy na interfejsie serial (zewnętrznym)

```
interface serial 1/0
  crypto map MYMAP
  exit
show crypto ipsec sa
clear crypto sa
debug crypto ipsec
debug crypto isakamp
```