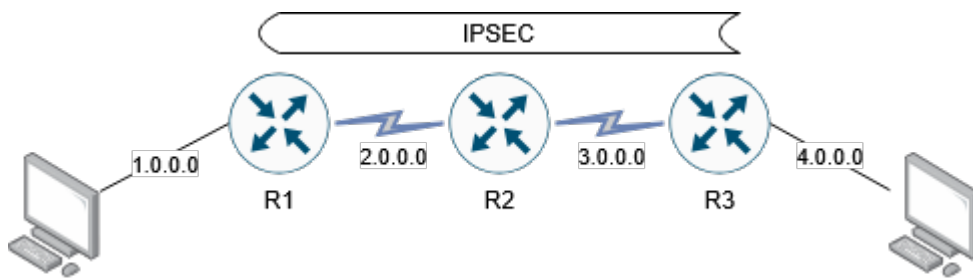


# Cisco: IPSEC Tunnel



## Notes:

### 1. configuring IKE

```
crypto isakamp enable
crypto isakamp policy 100
  authentication pre-share
  encryption des
  group 1
  hash md5
  lifetime 86400
exit
```

### Determining the Common Password and the address of the tunnel endpoint

```
crypto isakamp key cisco123 address 3.0.0.2
show crypto isakamp policy
```

### 3 Configuring IPsec parameters

```
crypto ipsec transfer-set MINE esp-des
  mode tunnel
  exit
show crypto ipsec transfer-set MINE
```

## Configuring crypto ACLs

```
access-list 102 permit ip host 2.0.0.1 host 3.0.0.2
```

## 5 Configuring crypto maps

```
crypto map MYMAP 10 ipsec-isakamp
  match address 102
  set transform-set MINE
  set peer 3.0.0.2
  exit
show crypto map
```

## 6. application of the crypto map on the serial (external) interface

```
interface serial 1/0
  crypto map MYMAP
  exit
show crypto ipsec sa
clear crypto sa
debug crypto ipsec
debug crypto isakamp
```